

More Is...

In addition to granting wishes, Minnesota's own **Wishes & More®** provides **Scholarship of Hope®** grants and Memorial funds with very limited staff and MANY volunteers.



We are a wish-granting organization that considers every wish, including popular Midwest wishes such as fishing, hunting, and recreational vehicles.

We are the only Minnesota organization that provides a \$1,000 **Scholarship of Hope** to each wish recipient, providing hope for their future.

We are the only Minnesota organization that gives memorial financial grants to families when a child does not survive to experience their wish.

Staff

Lora Anderson – Fundraising & Volunteer Specialist

Carol Bistodeau – Director of Wish Services

Joelle Gamble – Sr. Director of Communications & Development

Sarah Hanna – Office Manager

Contact Us

961 Hillwind Road NE
Fridley, Minnesota 55432

www.wishesandmore.org

763-502-1500

info@wishesandmore.org



@wishesandmore



@Wishes_and_More



@wishesandmoremn



@Wishes & More Children's Wish Foundation



2015 Annual Report

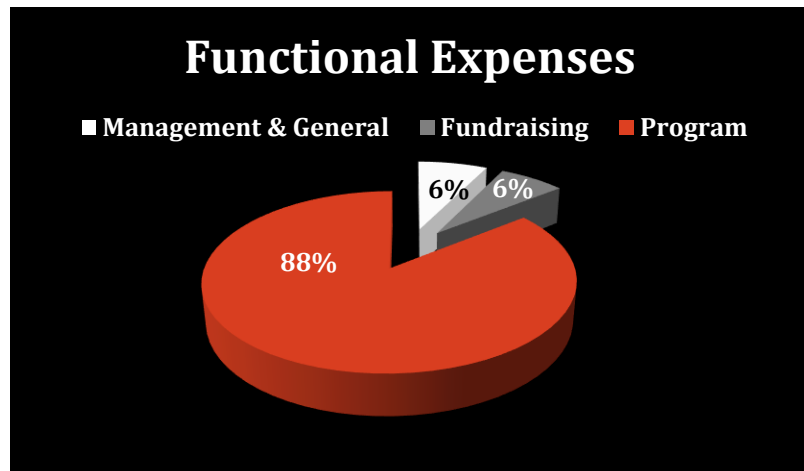
Table of Contents

Organization Overview	1
Programming	2
Wishes	2
Scholarship of Hope.....	2
Memorials.....	2
President’s Letter	3
2015 Finances.....	4
Functional Expenses	4
Financial Position.....	4
Board of Directors & Advisory Board.....	5

Board & Advisory Board

Chris Ames - Managing Partner, Landmark RE Group
William Belvedere - CPA & CFE, Schechter Dokken Kanter CPA's
Joshua Bird - Sales Director, GE Power & Water
Karla Blomberg - (*Board President*) Realtor, Berkshire Hathaway Home Services Sundial Realty
Randy Ehleringer - Private Wealth Advisor, Echelon Wealth Partners
Sharyl Hansen - Executive Director, Hansen Family Foundation
Chris Harristhal, J.D. - Larkin, Hoffman, Daly & Lindgren, LTD
John Hines - Radio Personality
Scott Johnson - Market Manager, Twin Cities Banking Division, Alerus Financial
Brian Kostick - Vice President, Practice Management, ActiFi
Carol LeDoux - Anoka County Commissioner
Tony Leung - United States Magistrate Judge, District of MN
Clay Matvick - Broadcaster, ESPN
Michelle Meiser, D.D.S. - Owner & Dentist, Riverdale Pediatric Dentistry
Ann Mueting, Ph.D. - CEO, Mueting, Raasch & Gebhardt, P.A.
Jason Muhlstein – (*Board Secretary*) Senior Manager, Wipfli LLP
Tom Reid - MN Wild Broadcaster, Tom Reid’s Hockey City Pub
Mark Robbins, J.D., Ph.D. – President, Kodiak Strategic Consultants, LLC
Jim Roehl – (*Board Vice President*) Assistant VP, Process Management Consultant, Wells Fargo
Cindy Sontag, CPA – (*Board Treasurer*) Mueting, Raasch & Gebhardt, P.A.
Robb Stauber - President, Goalcrease, Inc.
Governor Jesse and Terry Ventura - Former Minnesota Governor & First Lady, Actor, Businessman
Greg Wolf - VP, Wells Fargo Corporate Credit

2015 Finances



See Appendix A – 2015 Audited Financial Statements for more information.

2015 Financial Position

CURRENT ASSETS		SUPPORT	343,884
Cash	339,979	REVENUE	392,862
Certificates of Deposit	400,000	TOTAL SUPPORT/REVENUE	736,746
Pledges and Prepaid Expenses	72,642		
Property/Equipment	1,200	PROGRAM SERVICES	
TOTAL ASSETS	815,729	Wishes	507,600
TOTAL LIABILITIES/ASSETS	815,729	Memorials	54,000
CURRENT LIABILITIES	22,330	Scholarship of Hope grants	6,315
NET ASSETS	793,399	SUPPORTING ACTIVITIES	
		Management	40,244
		Fundraising	38,206
		TOTAL EXPENSES	646,365
		Change in Net Assets	90,381

Organization Overview

Mission



Wishes & More® enhances the life of a child fighting a terminal or life-threatening condition by providing extraordinary experiences... and more.

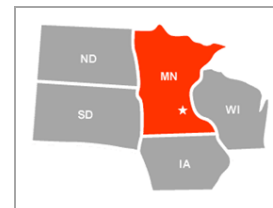
Purpose



Anneliese

The purpose of **Wishes & More** is to grant the wish of a child between birth and nineteen who has a terminal or life-threatening condition which will require ongoing treatment and to provide a **Scholarship of Hope**® to be used for higher education; or to give a memorial to the family in the event the child does not survive to have his/her wish fulfilled.

Population Served



Wishes & More serves all children who apply prior to their 19th birthday and have a physician's qualifying statement attesting to the child's life-threatening condition requiring ongoing treatment.

Wishes are granted to children living in Minnesota, or who live in the border states of; North Dakota, South Dakota, Iowa, and Wisconsin. **Wishes & More** also extends services to those receiving ongoing treatment in a Minnesota medical facility.

Unique Programming

Besides granting wishes to these special children who are fighting terminal or life-threatening conditions, **Wishes & More** goes beyond the wish. **More is...**

Popular Midwest Wishes

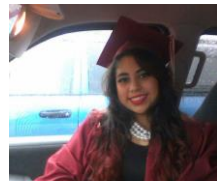


Kelly's Wish

Wishes & More does not discriminate against popular Midwest wish requests such as hunting, fishing, snowmobiles, water craft and sport equipment.

Scholarship of Hope®

Upon being granted their wish, each wish child will be presented with a scholarship certificate that will be redeemable as a \$1,000 financial grant to apply to any higher institution of learning beyond high school.



Arely's Scholarship

Memorial Grants



Persephonee's Memorial

Sadly, not all of the eligible children are able to experience a wish. In this unfortunate situation, **Wishes & More** will give a monetary gift to the family to use at their discretion.

President's Letter

Dear Friends,

Imagine last December being made aware of a seven month old whose parents were told to expect this to be the only Christmas they would have with him. And then to learn that the little boy's loving grandfather and great aunts have been



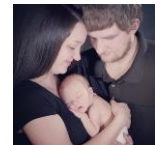
supporting the family through phone contact only because they were unable to financially or physically get to Sandstone, MN to see him. Imagine how great you would feel if you had the power to assist the family in getting to Kansas City and Texas for the holidays and giving all of the family members the opportunity to hold and love this tiny child.

Think about how great you would feel if you knew about a young man with a heart condition whose family moved to Rochester, MN in order to be close to Mayo clinic; and you were able to provide the tuition necessary for him to attend a private school for his senior year that focused on his musical aspirations.



Consider your pleasure in knowing that you provided a scholarship of \$1,000 for a young lady to attend a community college when two years ago, this teen battled cancer and months of chemotherapy kept her from her senior year of high school.

And what if you could provide financial support to a young family suffering the unimaginable pain of losing their baby in order to help them with the costs of final arrangements?



You don't need to imagine this, you just need to take **Wishes & More** into your heart and make it your charity and you will know that you are doing these things and MORE. Your support, financially or physically, is the backbone of this organization and I want you to feel proud and possessive...and to call it yours.

This local charity belongs to you, our supporters, and we want you to be proud to "own" it. We hope you follow us on Facebook where we post many of our wishes as they are happening; or that you are tuned in to our website to see our activities or to attend and follow our events. Our goal is that you take great pride in sharing our stories and in telling others how lean we are in our operational expenses. If you aren't actively supporting us yet, please consider doing whatever you can to be an active part of our team - to have **Wishes & More** as YOUR charity.

Karla